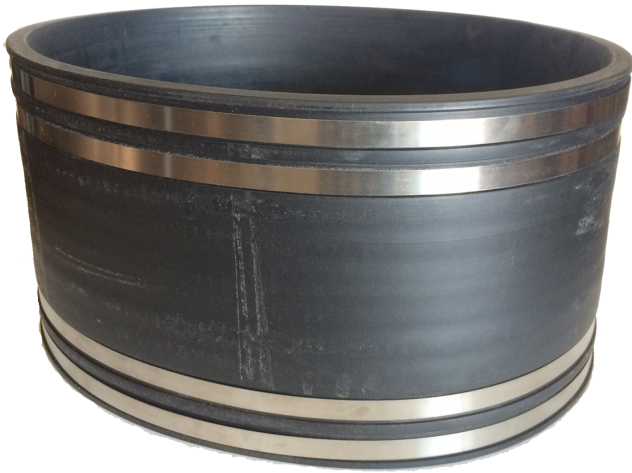


SPECIFICATIONS

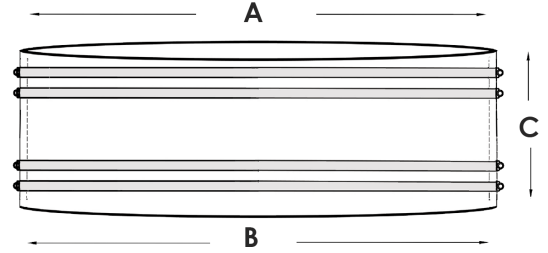
Lg. Diameter Sewer & Drain Flexible Pipe Coupling for Sewer & Drain applications



Part# **DS51-1818**

FITS: 18" A/CFBRE, Ductile Iron x 18" SCH40 ABS/PVC, Steel

Assembled with Flexible Rubber Bushing (s) on reduced end to accommodate pipe size range (18.32" to 19.05")



Coupling Made to ID Specifications

A SIDE (ID)	B SIDE (ID)	C SIDE HEIGHT
19.50"	18.70"	8.00"


Max Temp	140° degree F
Min Temp	-30° degree F
Pressure	Non-Pressure
Material	60/EPDM Rubber
Coupling Wall Thickness	1/2" (0.50")

Install Torque	60in-lb torque
Meets ASTM	C 1173 / D5926
Case Quantity	1 per case
Clamp Series	301SS Series Stainless
Worm Gear Bands	(4) DS-312 All SS Clamps

Coupling / Bushing

- Manufactured in the USA 
- Meeting Material Requirements of IPC® / IRC® 
- cUPC® Meets Canadian Standards
- ASTM C-1173 D-5926 
- Sporadic Temperature Rating 140°
- Maximum Test Pressure 4.3 PSI

SS Clamps

- Clamp: 1/2" Wide / AISI 301SS
- Clamp Torque: 60in-lb Install Torque
- Screw: 5/16" Hex Head / AISI 301SS
- Housing: All Stainless / AISI 304SS
- Meets Requirements: SAE J1670 

Typical Properties	C-1173 spec	DS/605-60	ASTM#
Durometer Shore A, ± 3 15sec	50-75	60	D-2240
Tensile Strength, PSI	1000	1525	D-412
Ultimate Elongation, %	200	363	D-412
Brittle Temperature Tb C°	-40	-40	D-746
Tear Strength	150in-lb	150in-lb	D-746



DALLAS SPECIALTY & MFG CO. 1161 RUGGLE ST. GRAND PRAIRIE, TX 75050
P: 972-641-8444 • 800-222-5644 • F: 972-641-8488
Email: ds@dalspc.com • www.dallasspecialty.com