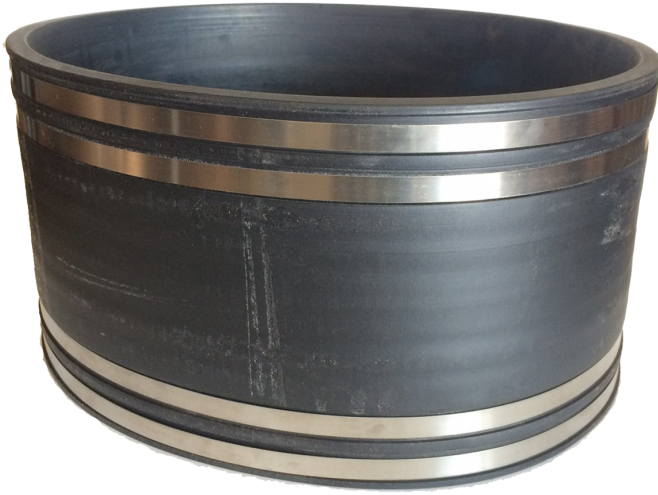


SPECIFICATIONS

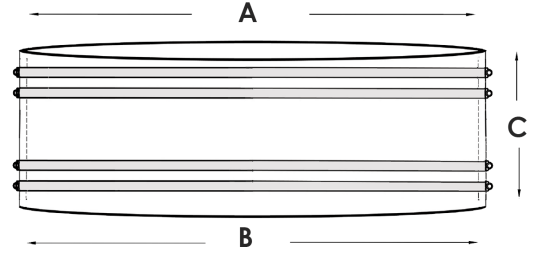
Lg. Diameter Flexible Pipe Coupling

for Sewer & Drain applications



Part# **DS56-2727**

FITS: 27" Cast Iron / PVC Pipe x 27" Cast Iron / PVC Pipe accommodates size range 27.45"-28.35" Pipe OD's x 27.45"-28.35" Pipe OD's (+/- 1-2% Pipe OD)



Coupling Made to ID Specifications



"A" (ID)	"B" (ID)	"C" WIDTH
28.00"	28.00"	8.00"

Maximum Temperature	140°degree F
Minimum Temperature	-30°degree F
Pressure Rating	No Pressure / for drainage
Material / Resins	60/EPDM Rubber
Coupling Wall Thickness	1/2" Thickness

Install Torque	60in-lb torque
Meets ASTM	C-1173 / D-5926
Case Qty	1 pc
Clamp SS Series	301 Series Stainless Steel
Clamps/Bands	(4) Worm Gear Stainless Steel Bands

Coupling

- Meeting Material Requirements of IPC[®] / IRC[®]
- cUPC[®] Meets Canadian Standards
- ASTM C-1173 D-5926 
- Sporadic Temperature Rating 140°
- Maximum Test Pressure 4.3 PSI

Clamps

- (4) Worm Gear All Stainless - 1/2" Width / 301SS Stainless Steel
- Installation Torque: 60in-lb
- Clamp Screw: 5/16" Hex Head / AISI 301SS
- Clamp Housing: All Stainless / AISI 304SS
- Meets Requirements: SAE J1670 

Typical Properties	C-1173 spec	DS/605-60	ASTM#
Durometer Shore A, ± 3 15sec	50-75	60	D-2240
Tensile Strength, PSI	1000	1525	D-412
Ultimate Elongation, %	200	363	D-412
Brittle Temperature Tb C°	-40	-40	D-746
Tear Strength	150in-lb	150in-lb	D-746



**DALLAS
SPECIALTY
& MFG CO.**

1161 RUGGLE ST. GRAND PRAIRIE, TX 75050

P: 972-641-8444 • 800-222-5644 • F: 972-641-8488

Email: ds@dalspc.com • www.dallasspecialty.com